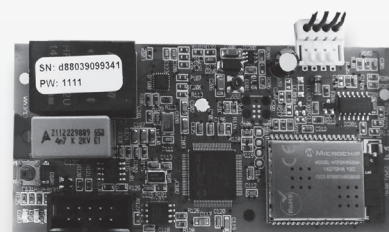
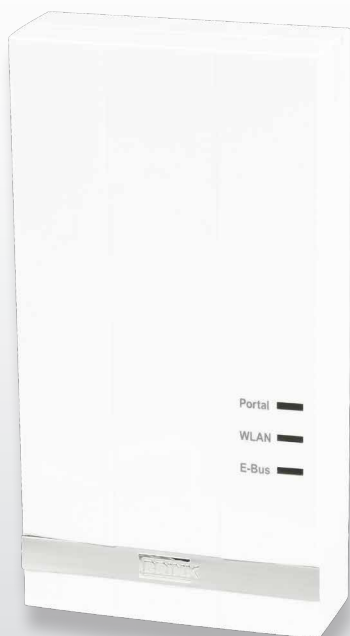


Brink Home eModule/iModule



INSTALLATION INSTRUCTIONS (English)

Air for Life

BRINK

Air for life

WWW.BRINKAIRFORLIFE.NL

614491-D

Installation instructions

Brink Home eModule/iModule



STORE NEAR THE APPLIANCE

This appliance may be used by children aged 8 and above, persons with reduced mental capacity, physical limitations or lack of experience and knowledge, provided they are under supervision or have received instructions on how to use the appliance safely and are aware of the potential hazards.

Children are not allowed to play with the appliance.

User cleaning and maintenance must not be carried out by children without supervision.

GB

The BRINK logo features the word 'BRINK' in a bold, black, sans-serif font. The text is enclosed within a red rectangular border that has a slight 3D effect, with the top and bottom bars appearing slightly thicker than the side bars.

	Step-by-step installation plan	1
1	Delivery	2
1.1	Scope of delivery	2
2	Overview	3
2.1	Description Brink Home Module	3
3	Specifications	4
3.1	Technical data.....	4
3.2	Overview Brink Home iModule	4
3.3	Overview Brink Home eModule.....	4
3.4	Function key op interface pcb.....	5
3.5	Meaning LEDs.....	5
4	Mounting & electric connection	6
4.1	Requirements on installation location	6
4.2	Mounting the Brink Home iModule	6
4.3	Mounting the Brink Home eModule	6
4.4	Electric connection Brink Home eModule.....	6
5	Connecting the Brink Home Module to a local network	7
5.1	Router with WPS function.....	7
5.2	Router without WPS-function	7
5.2.1	Network connection Home Module under Windows 8/ Windows 10	8
5.2.2	Network connection Home Module under Windows 7	9
5.2.3	Network connection Home Module with Apple system	10
6	Releasing Internet connection	12
6.1	Explanation configuration menu Home Module.....	12
6.1.1	Overview.....	12
6.1.2	Network	12
6.1.3	WLAN settings.....	14
6.2	Access configuration screen Home Module ...	13
6.2.1	Through IP address Home Module.....	13
6.2.2	Through Android App.....	13
6.2.3	Through IOS App.....	13
7	End of service life	14
7.1	Taking out of service.....	14
7.2	Disposal and recycling.....	14
8	Other information:	15
8.1	Use of the Brink Home Module without DSL connection	15
8.2	No support Proxy server.....	15

STEP 1: Mounting the Brink Home Module (= Chapter 4)

Brink Home iModule

This module can only be mounted in the ventilation appliance Air 70.

If you want to install the Brink Home iModule (interface without housing), then follow the instructions in Chapter 4.2 and in the Air 70 ventilation appliance manual.

Brink Home eModule

If you want to install the Brink Home eModule (interface in housing), then follow the instructions in Chapter 4.3.

STEP 2: Connecting the Brink Home Module to a local network (= Chapter 5)

Hint: Simple installation of the Brink Home Module is described in the quick-start manual that comes as standard with the Home Module.

If you are going to use the Brink Home Module only locally (without internet), only “step 1” and “step 2” are necessary. In that case you can only operate your Home Module within your network using the Brink Home Android App or the Brink Home IOS App.

If you want to connect the Brink Home Module to your network, then follow the instructions of Chapter 5.

STEP 3: Releasing the internet link (= Chapter 6)

If you want to release the internet connection of the Home Module, then follow the instructions in Chapter 6.

STEP 4: Adding the Home Module account to the Brink Portal

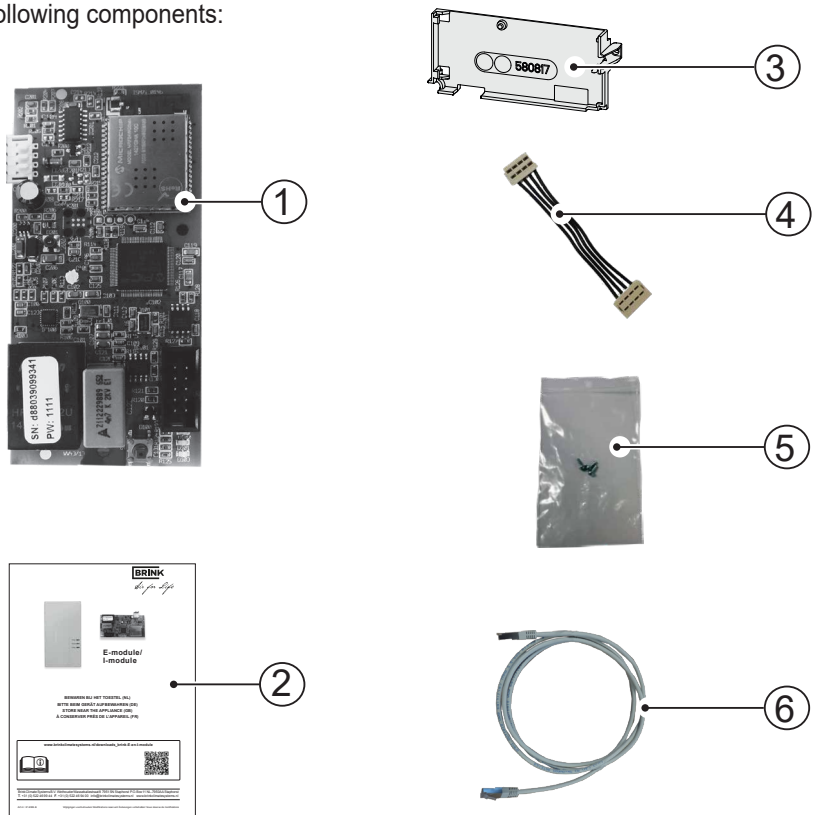
If you want to connect your Home Module account to the Brink Portal, follow the instructions in the manual of the Brink Portal

1.1 Scope of delivery

Before starting installation of the eModule or iModule, please check that it has been delivered complete and in undamaged condition.

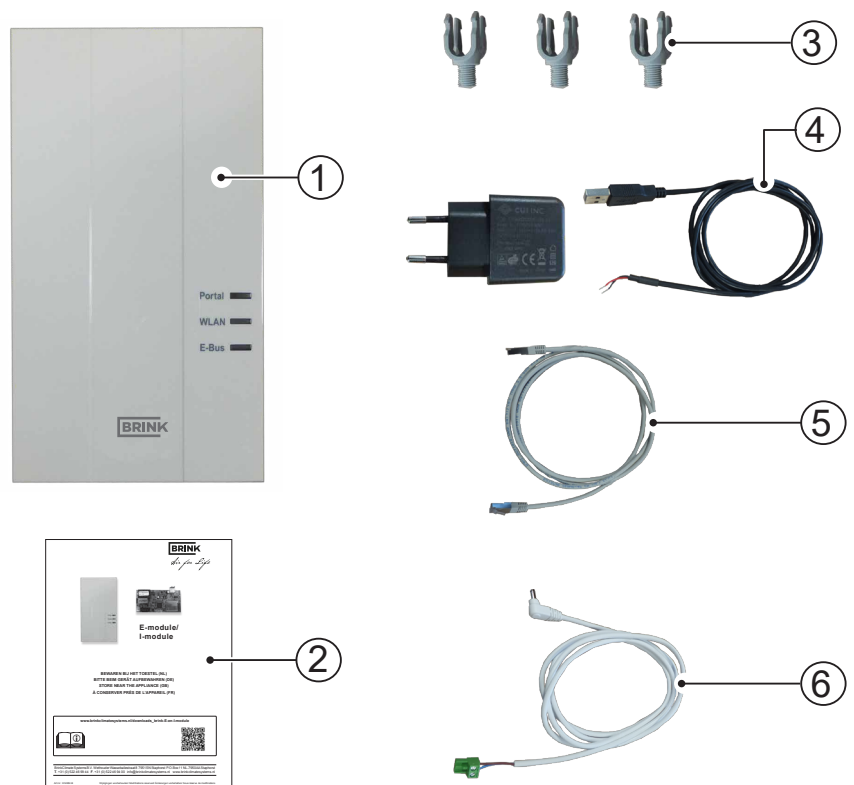
The scope of the delivery of the **iModule** includes the following components:

- ① Brink Home iModule
- ② Quick-start manual
- ③ Mounting plate Home Module
- ④ Connection cable
- ⑤ Screws for fixation mounting plate
- ⑥ LAN cable



The scope of the delivery of the **eModule** includes the following components:

- ① Brink Home eModule
- ② Quick-start manual
- ③ 3 cable strain reliefs
- ④ USB cable for power supply
- ⑤ LAN cable
- ⑥ eBus cable



2.1 Description Brink Home Module

The Brink Home Module provides access to Brink ventilation systems through the home network or the internet.

The Brink Home Module can be used to visualise current statuses, measured values and parameters of Brink ventilation systems, and to change key settings.

The Brink Home Module can be linked to a network using a network cable (LAN) or a wireless (WLAN) connection.

The Home Module is controlled through the Brink Portal or through the Brink Home App (smartphone). The Brink Portal is a user interface that is operated through a web browser. The Brink Home App for smartphones is available for Android and IOS systems and can be downloaded through the Google Play Store or Apple App Store.

If access to a Brink ventilation system is only required locally in the own home network, no internet connection is needed. The home network is controlled through the Brink Home smartphone App.

Multiple access

A maximum of two users can simultaneously access a Brink ventilation system through the Brink Home Module!

Local connection

There can only be one local connection with the Brink Home Module at a time!

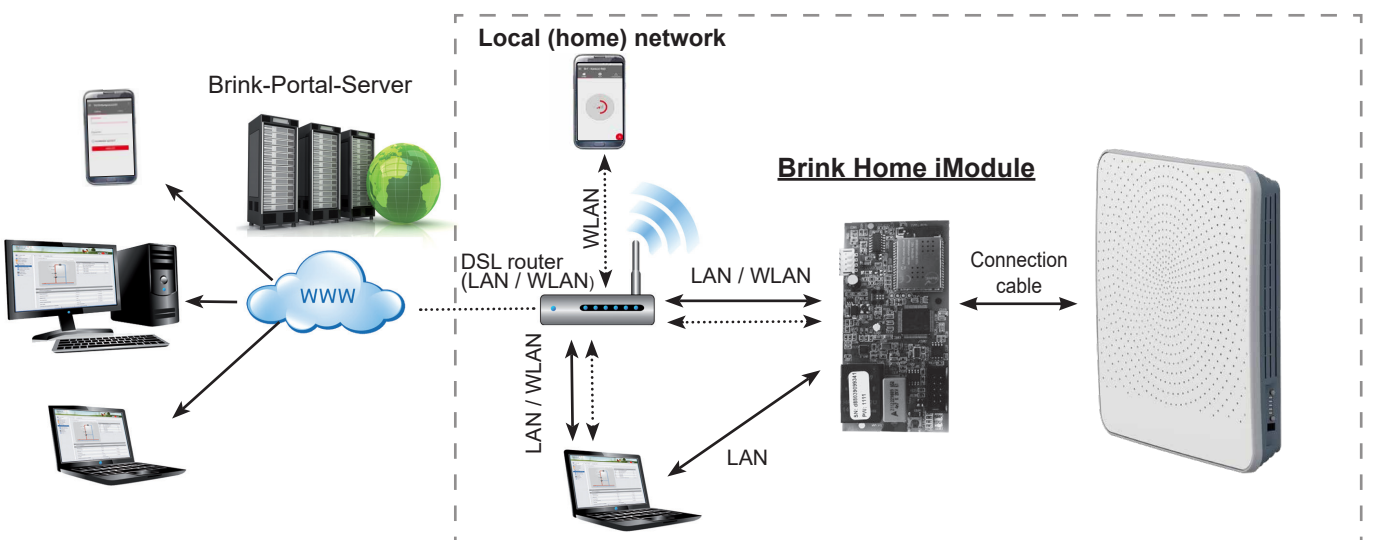
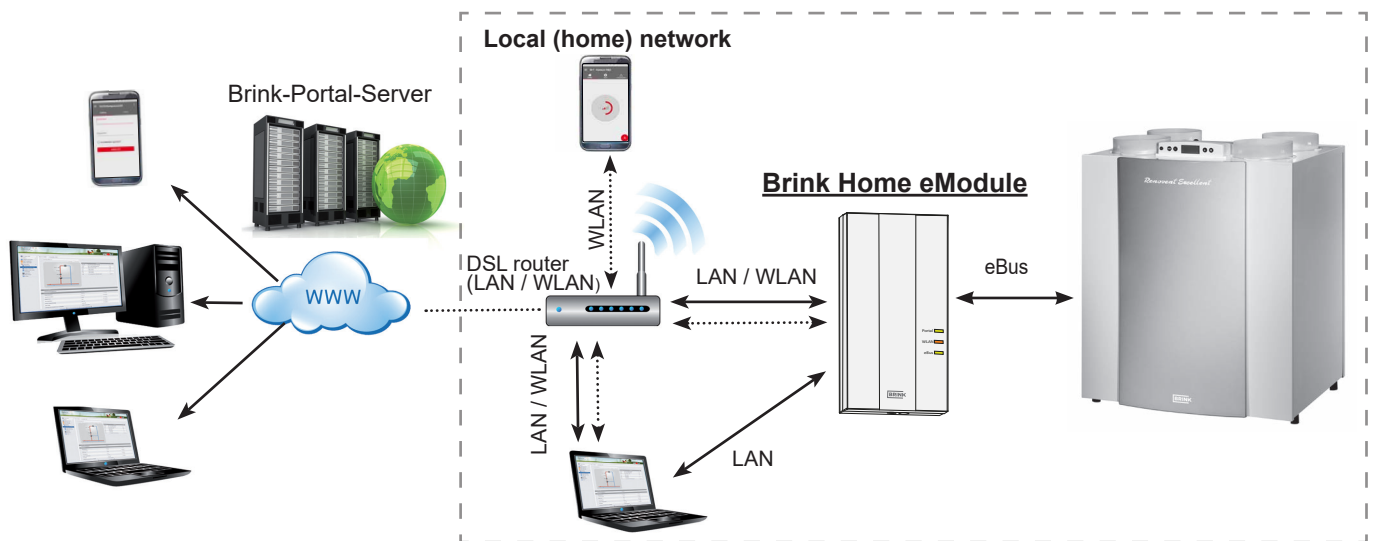
Ventilation systems

The Brink Home eModule is compatible with the following ventilation systems:

- Renovent Excellent series
- Renovent Sky series
- Renovent Elan

The Brink Home iModule is compatible with the following ventilation systems:

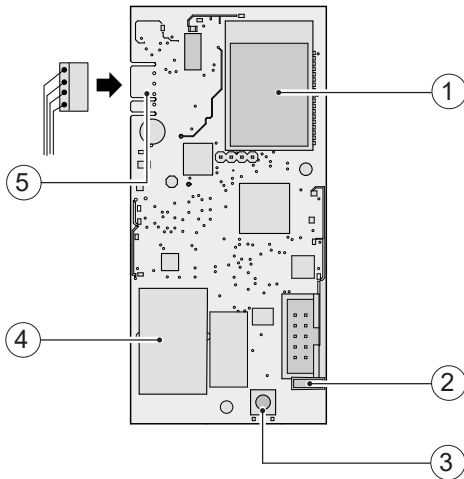
- Air 70



3.1 Technical data

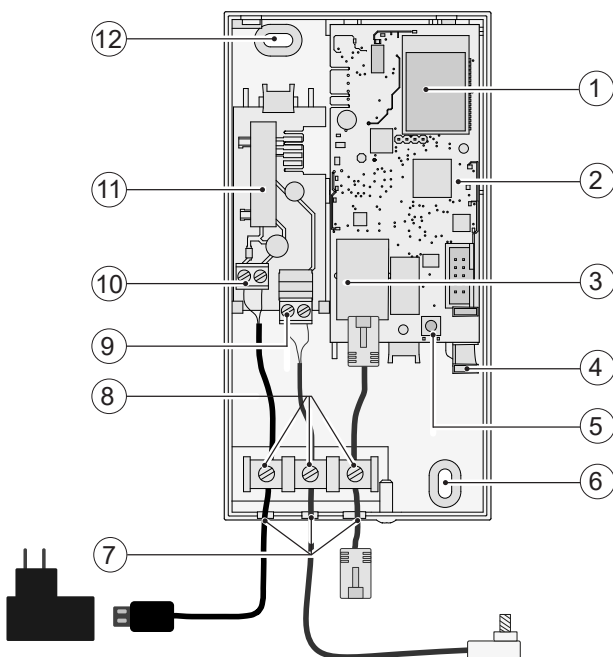
Name	Brink Home iModule	Brink Home eModule
Power supply	5 VDC through USB A connector	
WLAN standard	IEEE802.11b/g/n, 2,4 GHz, channel 1 - 11	
LAN	RJ45, 10/100 Mbits	
Dimensions (w x h x d) [mm]	47 x 100 x 18	84 x 160 x 31
Operating temperature/humidity	0-60°C / 20-90% RH non-condensing	
Storage conditions	- 30-70°C / 0-95% RH non-condensing	
IP class	Not applicable	IP 30

3.2 Overview Brink Home iModule



1	WLAN module
2	LEDs (green, red & yellow)
3	Push button
4	LAN connection Imprint: Serial number (SN) and password Home module (PW)
5	Link connection cable to pcb Air 70

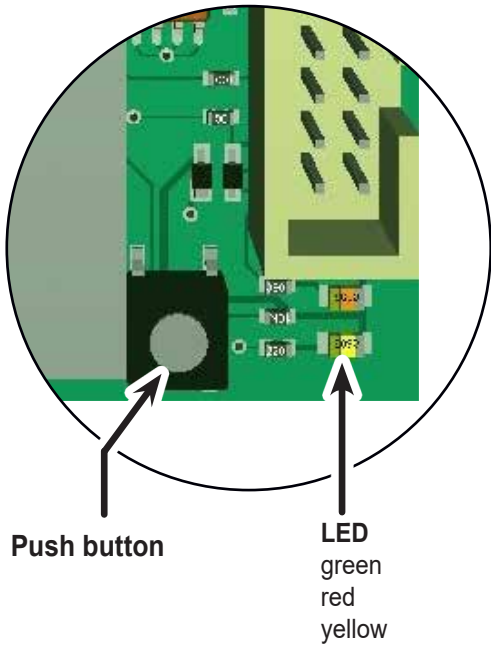
3.3 Overview Brink Home eModule



1	WLAN module
2	Interface module eModule
3	LAN connection Imprint: Serial number (SN) and password Home module (PW)
4	LEDs (green, red & yellow)
5	Push button
6	Eye for wall mounting
7	Cable grommets
8	Cable strain reliefs
9	eBUS connection
10	Power supply connection (USB cable)
11	eModule - contact pcb
12	Eye for wall mounting

3.4 Function push button

The push button on the Home Module interface has the following functions.



Time pressing push button	Function
≥ 1 s and ≤ 3 s Green LED	When the green LED lights up, release the push button. Then enter the static IP address "192.168.1.67" in a web browser.
≥ 3 s and ≤ 5 s Green and yellow LED	Starting WPS function (when green and yellow LEDs light up, release push button).
> 10 s All LEDs	<p>Reset – The Brink Home Module is reset to the factory settings (when all LEDs light up, release push button). Subsequently, restart the Home Module.</p> <p><u>Home iModule</u> - switching on/off Air 70</p> <p><u>Home eModule</u> - disconnecting/reconnecting USB power supply</p>

3.5 Meaning LEDs

Green LED:	Off:	No connection with Brink Portal
	Blinking:	Attempt to connect with Brink Portal
	On:	Successfully connected with Brink Portal
Red LED:	Off:	WLAN not active or Home Module communicates through network cable
	Blinking:	Attempt to connect with a preset WLAN network.
	Blinking rapidly:	WPS active
	On:	Successfully connected with the preset WLAN network
Yellow LED:	Off:	No eBus communication
	Blinking:	All ventilation components are being read in
	On:	Successfully connected with eBus

4.1 Requirements for mounting location

The Brink Home Module can only be used inside buildings and not in humid spaces!

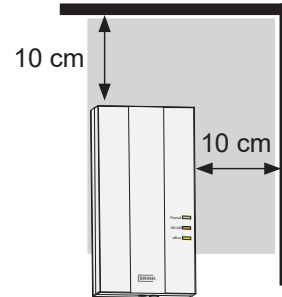
4.2 Mounting the Brink Home iModule

For mounting and electric connections of the Brink Home iModule, refer to the installation instructions of the ventilation appliance Air 70. Installation instructions can be downloaded from: www.brinkclimatesystems.nl

4.3 Mounting the Brink Home eModule

Mount the Brink Home eModule to a wall using screws in the holes provided for that purpose.

When connecting the Brink Home eModule to the home network using WLAN, be sure to mount the Brink Home eModule at a location with proper WLAN reception.



4.4 Electric connection Brink Home eModule

Unscrew the screw from the cover and remove the cover to open the Home eModule.

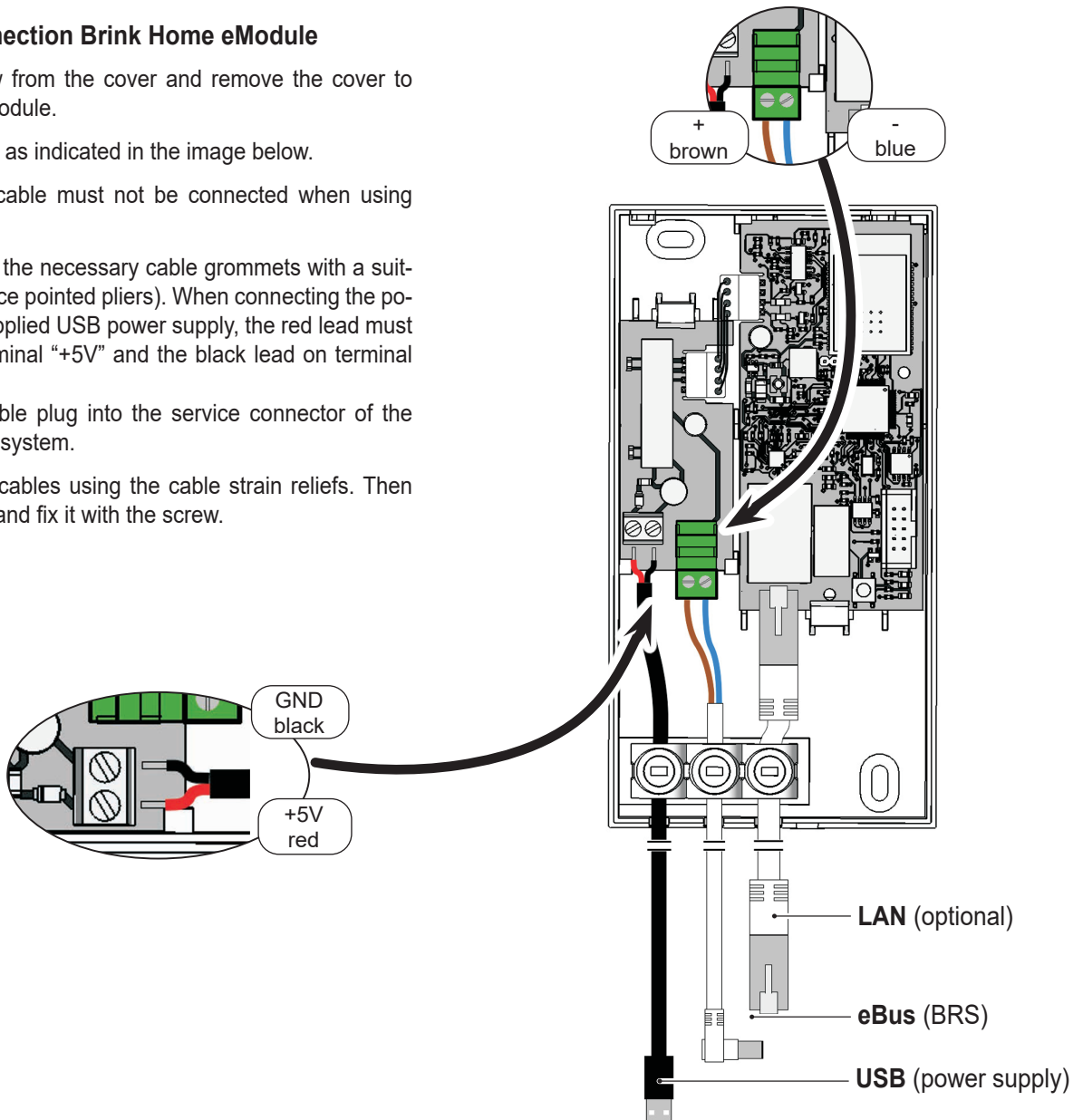
Connect the cables as indicated in the image below.

Note: The LAN cable must not be connected when using WLAN.

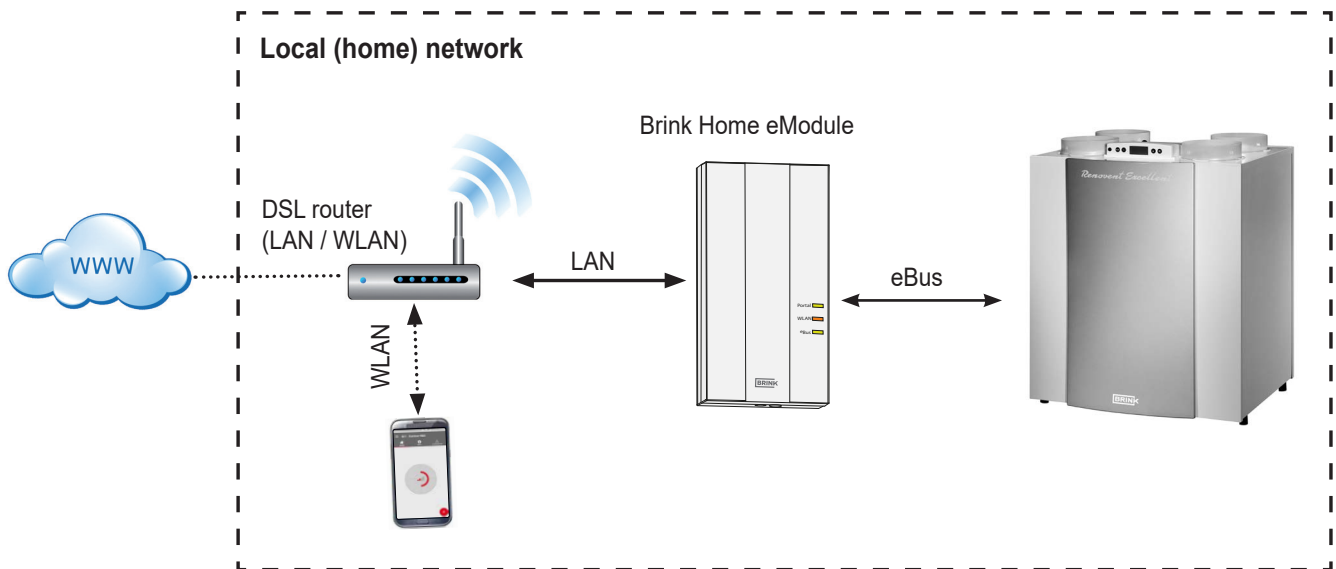
Carefully break out the necessary cable grommets with a suitable tool (for instance pointed pliers). When connecting the power through the supplied USB power supply, the red lead must be screwed on terminal “+5V” and the black lead on terminal “GND”.

Insert the eBus cable plug into the service connector of the relevant ventilation system.

Fix the connected cables using the cable strain reliefs. Then remount the cover and fix it with the screw.



5.1 Router with WPS function



Using the router WPS function (WiFi Protected Setup), it only takes the push of a button to connect the Brink Home Module to the WLAN network. The router does have to support the WPS function (see router manual).

1. **Note:** Make sure no network cable is connected to the Home Module!
2. Connect the eBus cable to the ventilation system.
3. Switching on the Brink Home Module
Switch on the ventilation appliance (Brink Home iModule), respectively connect the USB power supply (Brink Home eModule).
4. Activate the WPS function on your router by pushing the WPS button (see router manual).
5. Press the Home Module button for 3-5 seconds (within 30 sec.) (release when green and yellow LEDs light up).
6. The red LED on the Home Module starts blinking rapidly. If the red LED remains on, the connection has been made.

7. After some 5 minutes, the yellow LED will remain on and a local link can be made with the Brink Home App.
8. Proceed with Chapter 6.

If the system is not working (red LED keeps blinking), then reset the Home Module and repeat the above steps (Press button > 10 sec until all LEDs light up, then unplug the power supply and restore)!

Hint: If the network contains a WLAN repeater, note the following.

Many WLAN repeaters have a WPS button that can only be used to realise a connection with the router. It is not possible to link the Home Module to the WLAN with this button. Only the WPS button on the router itself can realise a connection with the Home Module. The Home Module must be within range of the router.

5.2 Router without WPS function

If your router does not have a WPS function, the link with the local network must be realised using a laptop/desktop (with administrator rights).

- Is your computer running Windows 8 or 10, then follow the instructions in Chapter 5.2.1
- Is your computer running Windows 7, then follow the instructions in Chapter 5.2.2

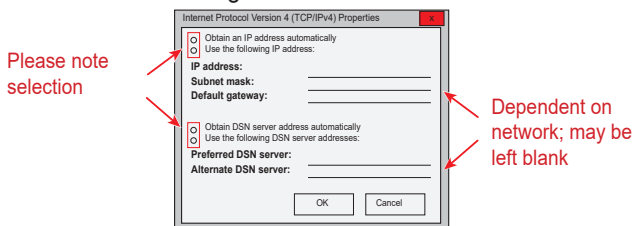
- If you are using an Apple computer, and follow the instructions in Chapter 5.2.3

5.2.1 Network connection Home Module under Windows 8 / Windows 10

1. Disconnect the power supply from the Home Module. Switch off the ventilation appliance (Home iModule) respectively disconnect the USB power supply (Home eModule).
2. Directly connect the LAN cable to the Home Module and the laptop/desktop.
3. Reconnect the power supply to the Home Module. Switch on the ventilation appliance (Brink Home iModule), respectively connect the USB power supply (Home eModule).
4. Laptop/desktop: Move the mouse cursor to the lower left corner of the desktop. The start button appears.
5. Right-click the start button and select "Control panel".
6. In the screen that appears, select "Network & Internet" (if "Network & Internet" should not be shown, select, "Network and Sharing Center". Also refer to next item.).
7. Select "Network and Sharing Center".
8. In the menu bar on the left, select "Change adapter settings".
9. Right-click the network connection that the Home Module is connected to and select "Properties".

Hint: You can identify the network connection by unplugging and plugging in the network cable on the laptop/desktop. The correct network connection is the one for which the icon changes.

10. Select "Internet Protocol Version 4 (TCP / IPv4)" and then click "Properties".
11. Record the settings.



12. Select/activate "Use the following IP Address:".
13. Fill in under "IP address": 192.168.1.68
14. Fill in under "Subnet mask": 255.255.255.0
15. The items "Standard gateway", "Preferred DNS Server" and "Alternate DNS server" remain empty.
16. Click "OK" to confirm the input.
17. Click "Close" (or "Done/Exit") (Important! Settings will only be activated after this step).

18. Home Module: The static IP address 192.168.1.67 of the Home Module will be activated when the push button is pressed during 1-3 s (release when the **green** LED lights up).
19. Laptop/desktop: The control panel of the Home Module can be opened by entering the static IP address 192.168.1.67 in a web browser.
20. Select "Network" in the menu bar on the left.
21. Enter the following login information:
Username: admin /Password: 1111
22. "Obtain an IP address automatically (DHCP)" remains active.
23. Change the Home Module password. The password must have at least 8 characters, with at least one lower-case and one upper-case letter as well as one number or special character.

Hint: Make a note of your new Home Module password. You will need it later.

24. Tick "Enable internet connection to the Brink portal server".
25. Store the information with "Save settings".

If the Home Module must use WLAN, you must also go through the next steps. If the Home Module is connected through a network cable, then continue with step 30.

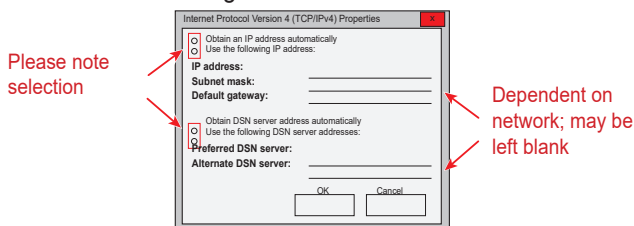
26. WLAN: Select "Network" in the menu bar on the left.
27. WLAN: Log in with the username "admin" and the password of the Home Module that you changed in step 23.
28. WLAN: Enter the communication and access data of your WLAN in (your own router data).
29. WLAN: Store the information with "Save settings".
30. Switch off the ventilation appliance (Home iModule) respectively disconnect the USB power supply (Home eModule). If the Home Module uses a network cable, then connect the network cable of the real network. Make sure that no LAN cable is connected if you are using WLAN.
31. Switch on the ventilation appliance (Brink Home iModule), respectively connect the USB power supply (Home eModule).
32. Restore the original network setting. Select "Obtain an IP address automatically" (see 9).
33. For registration in Brink Portal, see the separate Brink Portal manual. .

5.2.2 Network connection Home Module under Windows 7

1. Disconnect the power supply from the Home Module. Switch off the ventilation appliance (Home iModule) respectively disconnect the USB power supply (Home eModule).
2. Directly connect the LAN cable to the Home Module and the laptop/desktop.
3. Reconnect the power supply to the Home Module. Switch on the ventilation appliance (Brink Home iModule), respectively connect the USB power supply (Home eModule).
4. Laptop/desktop: Click the start button (bottom left) to call up the start menu.
5. Select "Control panel".
6. In the screen that appears, select "Network & Internet" (if "Network & Internet" should not be shown, select, "Network and Sharing Center". Also refer to next item.)
7. Select "Network and Sharing Center".
8. In the menu bar on the left, select "Change adapter settings".
9. Right-click the network connection that the Home Module is connected to and select "Properties".

Hint: You can identify the network connection by unplugging and plugging in the network cable on the laptop/desktop. The correct network connection is the one for which the icon changes.

10. Select "Internet Protocol Version 4 (TCP / IPv4)" and then click "Properties".
11. Record the settings.



12. Select/activate "Use the following IP address:"
13. Fill in under "IP address": 192.168.1.68
14. Fill in under "Subnet mask": 255.255.255.0
15. The items "Standard gateway", "Preferred DNS-Server" and "Alternate DNS server" remain empty.
16. Click "OK" to confirm the input.
17. Click "Close" (or "Done/Exit") (Important! Settings will only be activated after this step).

18. Home Module: The static IP address 192.168.1.67 of the Home Module will be activated when the push button is pressed during 1-3 s (release when the **green** LED lights up).
19. Laptop/desktop: The control panel of the Home Module can be opened by entering the static IP address 192.168.1.67 in a web browser.
20. Select "Network" in the menu bar on the left.
21. Enter the following login information:
Username: admin/ Password: 1111
22. "Obtain an IP address automatically (DHCP)" remains active.
23. Change the Home Module password. The password must have at least 8 characters, with at least one lower-case and one upper-case letter as well as one number or special character.

Hint: Make a note of your new Home Module password You will need it later..

24. Tick "Enable internet connection to the Brink portal server".
25. Store the information with "Save settings".

If the Home Module must use WLAN, you must also go through the next steps. If the Home Module is connected through a network cable, then continue with step 30.

26. WLAN: Select "WLAN" in the menu bar on the left.
27. WLAN: Log in with the username "admin" and the password of the Home Module that you changed in step 23.
28. WLAN: Enter the communication and access data of your WLAN in (your own router data).
29. WLAN: Store the information with "Save settings".
30. Switch off the ventilation appliance (Home iModule) respectively disconnect the USB power supply (Home eModule). If the Home Module uses a network cable, then connect the network cable of the real network. Make sure that no LAN cable is connected if you are using WLAN.
31. Switch on the ventilation appliance (Brink Home iModule), respectively connect the USB power supply (Home eModule).
32. Restore the original network setting. Select "Obtain an IP address automatically" (see 9).
33. For registration in Brink Portal, see the separate Brink Portal manual.

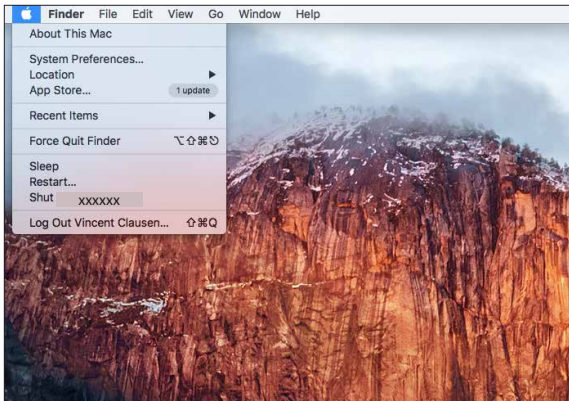
5.2.3 Network connection Home Module with Apple system

1. Disconnect the power supply from the Home Module. Switch off the ventilation appliance (Home iModule) respectively disconnect the USB power supply (Home eModule).

2. Connect the Home module to the MAC using the LAN cable.



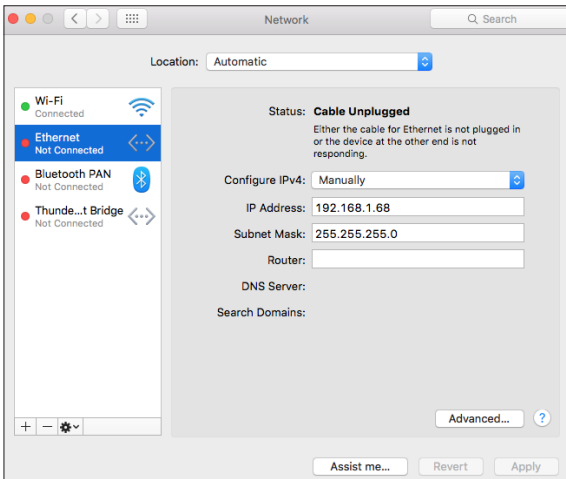
3. Open system preferences on the MAC. That may be done with the use of the symbol in the Dock or through Apple (top right) and selecting System preferences.



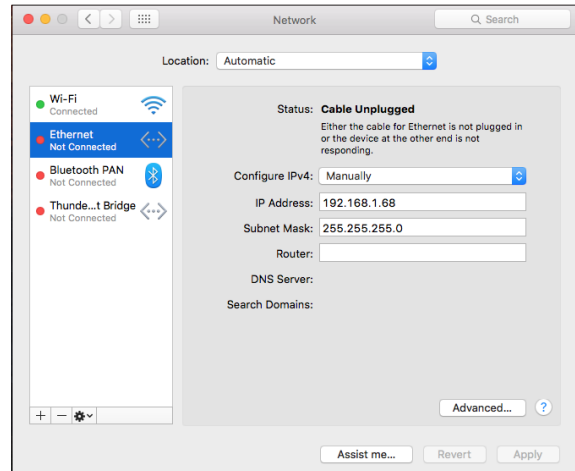
4. In System preferences, select "Network"



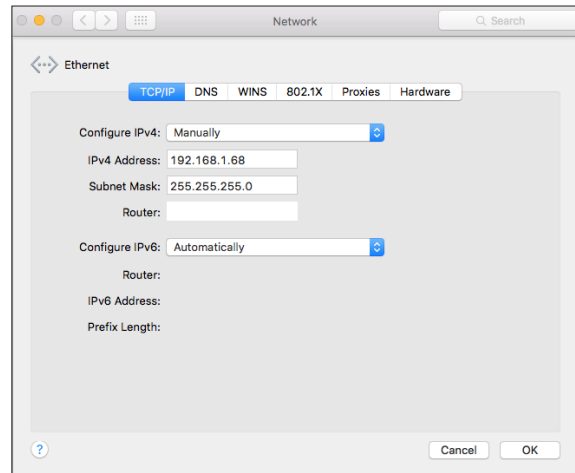
5. Select "Ethernet"



6. Select "Advanced"



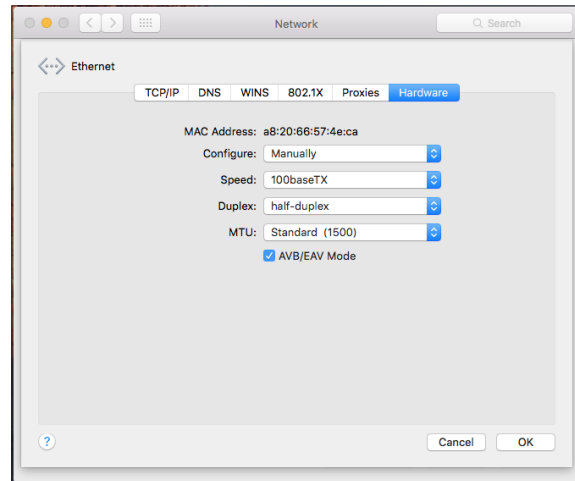
7. Under "Configure IPv4", select "Manually"



8. Enter IP Address 192.168.1.68

9. Enter Subnet mask 255.255.255.0 in

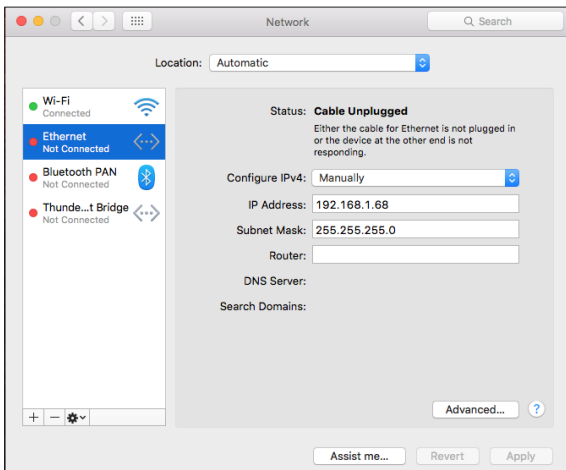
10. Then select "Hardware"



11. Check that Configure is on Automatic.

12. Select "OK" to save the setting.

13. Select “Apply”

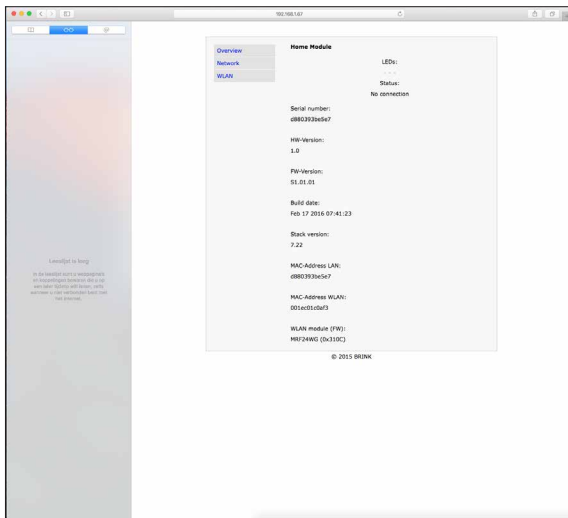


14. Press the Home Module button 1 to 3 seconds to activate the IP address.

Hint: When everything been set properly, the light at Ethernet will also become green.

15. Open Safari

16. Enter 192.168.1.67 in the address bar



17. Select “Network” in the menu bar on the left.

18. Enter the following login information:
Username: admin / Password: 1111

19. “Obtain an IP address automatically (DHCP)” remains active.

20. Change the Home Module password. The password must have at least 8 characters, with at least one lower-case and one upper-case letter as well as one number or special character.

Hint: Make a note of your new Home Module password. You will need it later.

21. Tick “Enable internet connection to the Brink portal server”.

22. Store the information with “Save settings”.

If the Home Module must use WLAN, you also go through the next steps. If the Home Module is connected through a network cable, then continue with step 27.

23. WLAN: Select “WLAN” in the menu bar on the left.

24. WLAN: Log in with the username “admin” and the password of the Home Module that you changed in step 20.

25. WLAN: Enter the access data of your WLAN in (your own router data).

26. WLAN: Store the information with “Save settings”.

27. Switch off the ventilation appliance (Home iModule) respectively disconnect the USB power supply (Home eModule). If the Home Module uses a network cable, then connect the network cable of the real network. Make sure that no LAN cable is connected if you are using WLAN.

28. Switch on the ventilation appliance (Brink Home iModule), respectively connect the USB power supply (Home eModule).

29. Restore the original network setting.
Select “Obtain an IP address automatically” (see 7).

30. For registration in Brink Portal, see the separate Brink Portal manual.

The Brink Home module has a neatly organised control menu, which can be accessed in a web browser using the IP address of your home Module (see section 6.2).

First the user information must be entered to be able to modify anything:

Username: admin

Password: 1111 (or password as changed in chapter 5)

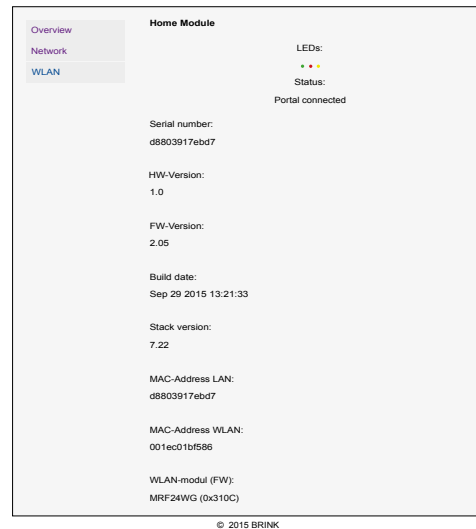
The Brink Home App also offers access to the control panels.



6.1 Explanation control panels Home Module

6.1.1 Overview

The item 'Overview' displays the status of the interface module, the serial number, and the status of the LEDs on the interface module.



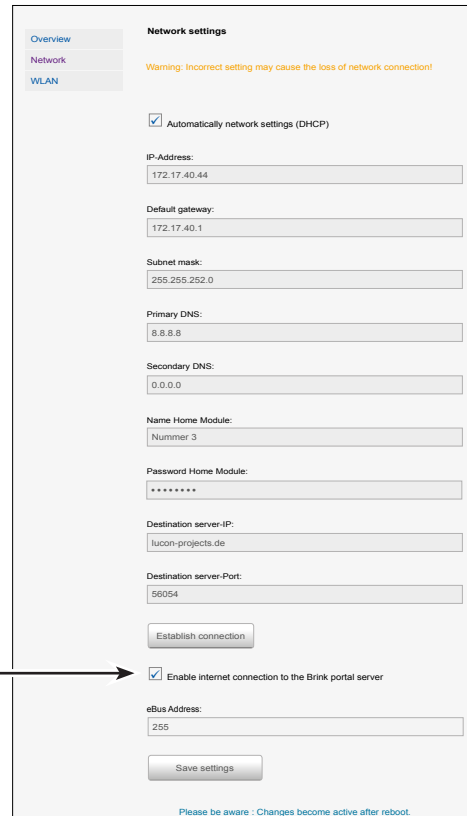
6.1.2 Network

If the Home Module must be used with static network settings, "Obtain an IP address automatically (DHCP)" must be deactivated.

In addition, name and password of the Home Module can be changed and an internet link with the Brink Portal-Server can be released.

After the Home module password has been changed, logging into the configuration menu will only be possible with this changed password. The username remains unchanged (admin).

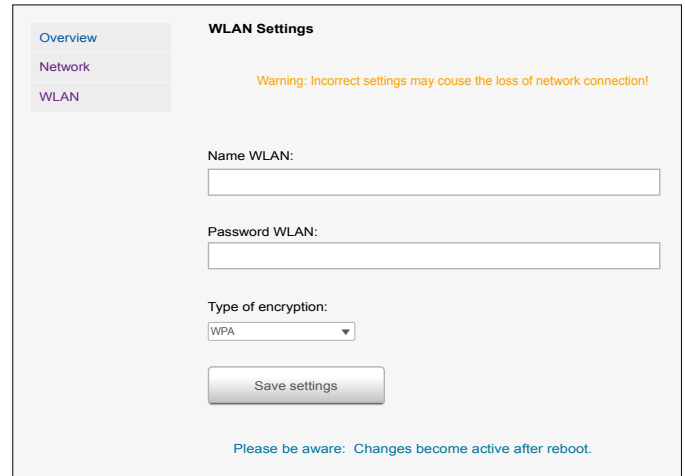
Clicking "Save settings" sends the changed settings to the memory. Modified network settings will only become valid after the Home Module has been rebooted (switch the device on/off).



6.1.3 WLAN settings

When connecting the Home Module through WLAN, your router information must be entered here:

- Name WLAN (SSID)
- Password WLAN
- Type of encryption WPA2.
See router manual.



© 2015 BRINK

6.2 Access to control panel Home Module

6.2.1 Through IP address Home Module

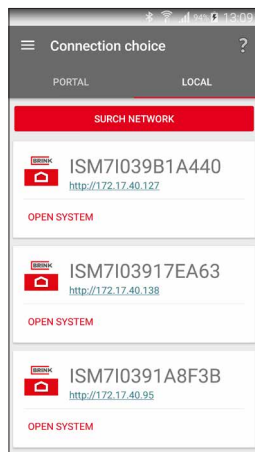
The IP address assigned to the Brink Home Module can be identified with the aid of a network analysis application. The applications in question are freely available for laptop/desktop and smartphones (for instance 'FING').

The name of the Home Module is shown in the list of network members as "Microchip Technology".

6.2.2 Through Android App

Remark: the Brink Home Module and the smartphone must be connected to the same network.

- 1) Open the Brink Home App.



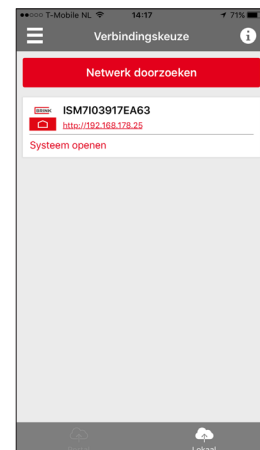
- 2) Select "Local".

- 3) The Brink Home App will search the network for the available Home Module(s).
- 4) Click the web page link of the desired Home Module. The Home Module can be identified by the serial number that starts with ISM7. (see also Chapters 3.4 and 3.5).
- 5) The web browser on your smartphone will be opened and the Home Module control panel is displayed.
- 6) Proceed with "step 3" of the quick-start manual or with step 20 of Chapter 5.2.1.

6.2.3 Through IOS App

Remark: the Brink Home Module and the smartphone must be connected to the same network.

- 1) Open the Brink Home App.



- 2) Select "Local".

- 3) The Brink Home App will search the network for the available Home Module(s).
- 4) Click the web page link of the desired Home Module. The Home Module can be identified by the serial number that starts with ISM7. (see also Chapters 3.4 and 3.5).
- 5) The web browser on your smartphone will be opened and the Home Module control panel is displayed.
- 6) Proceed with "step 3" of the quick-start manual or with step 17 of Chapter 5.2.3.

7 Taking out of service and disposal

7.1 Taking out of service

- ▶ When taking the Brink Home Module out of service, proceed in the opposite sequence as when installing.
 - ▶ Remove de Brink Home Module in accordance with the regulations.
-

7.2 Disposal and recycling

Brink Home Module

The Brink Home Module must not be put in the household garbage after its service life.



- ▶ Make sure the Brink Home Module and any used accessories are disposed of in an ecologically sound manner.

Packaging

- ▶ Make sure the packaging of the Brink Home Module and any used accessories are disposed of in an ecologically sound manner.

8.1 Other information

8.1 Using the Brink Home Module without DSL connection

As an alternative for a DSL router, you can also use a 3G router to control the Brink Home Module. Make sure that the 3G router is located in such a manner that satisfactory reception is possible.

We know from experience that you should assume a monthly data rate of 30 to 100 MB.

8.2 No support proxy-server

An internet connection through the proxy server is not supported.

BRINK

Air for life

BRINK CLIMATE SYSTEMS B.V.

Postbus 11 NL-7950 AA Staphorst The Netherlands
Wethouder Wassebaliestraat 8 7951 SN Staphorst The Netherlands
Phone +31 (0) 522 46 99 44
Fax +31 (0) 522 46 94 00
info@brinkclimatesystems.nl
WWW.BRINKAIRFORLIFE.NL